

Specifications

Color	White cover and base
LED Lights	Changing lights – Blue, Green, Purple & Red
Modes Misting	Misting – On/Off
Modes Light	Off or Rotating Lights or Stop On One Color
Capacity	120 ml / 4.05 fl oz
Run Time	4 hours
Coverage	Up to 250 square feet
Voltage	120 V

Troubleshooting

SYMPTOM	CAUSE	SOLUTION
No mist	Using incorrect water, distilled or purified	Use Tap Water (without filter)
	Unit is out of water	Add additional water
No mist or little mist	Unit needs to be cleaned. Oils are clinging to ceramic disc or sensor	Clean unit as advised in instructions with clean water, dry with cloth & clean ceramic disc/sensor with brush or swab.
	Water level is higher than max level line	Clean unit and add water 1/2 way to fill line and additional water after getting mist.
Blinking Lights	Water level indicator is dirty	Clean unit as advised. Pay particular attention to swab the sensor/disc inside the bottom of unit.
Unit will not stop running even though empty	Water level indicator is dirty	Clean unit as advised. Pay particular attention to swab the sensor/disc inside the bottom of unit.

CAUTION: Keep away from children and pets.

We will be happy to assist you if you have any questions.
Please call 1-888-548-0040.
Your call will be returned in 24 hours.

Distributed by NOW Foods
Bloomington, IL 60108, U.S.A.
www.nowfoods.com/nowsolutions

Customer Service 888-548-0040

Product of China

Aromatherapy & Essential Oils

NOW® Solutions' essential oils are genuine reflections of the botanicals of which they're born. This wide array of essential oils is comprised of 100% pure and natural extracts teeming with beneficial substances possessing functional groups that, when properly diffused, can encourage wellness, tranquility and inspire minds.

Aromatherapy is the diffusion of pure, natural aromatic essences from plants and botanicals for the purpose of promoting harmony of the body, mind, and spirit. It's a natural technique that's non-invasive yet all-encompassing in its ability to affect the well-being of the whole person through the use of one of our most powerful senses – the sense of smell.

Aromatherapy works through two different methods of action. The first is through the effect of aromas on the brain, which work through the olfactory system to affect the limbic system. The second is through the direct effects of the beneficial substances naturally inherent in the botanicals that essential oils are derived from. Aromatherapy is not intended as a cure for any ailment. Rather, it helps to promote homeostasis, possibly through indirect effects on the immune system and by improving the mental state of the user.

The science of producing essential oils has evolved significantly over the years. These days producing an essential oil that's highly concentrated, identity verified, and beneficial is a craft that involves a delicate balance of art and science that cannot be compromised. Fresh botanicals bursting with vitality, strict attention to detail, and meticulous extraction methods are what separate the elite essential oils from the run-of-the-mill natural and synthetic oils you'll find on the market today. At NOW® Solutions we take the quality and safety of our oils very seriously, and we take great pride in ensuring that every oil we produce is brought to you in a manner that's scientifically and environmentally responsible.



For more information visit www.nowfoods.com/nowsolutions



now®
solutions



Ultrasonic Oil Diffuser

www.nowfoods.com/nowsolutions

instructions & care

Balancing Blends

Daily Balance

Add the following oils to a diffuser and enjoy:

- 2 drops of NOW® Geranium Oil
- 2 drops of NOW® Rose Absolute Oil
- 2 drops of NOW® Clary Sage Oil

Headache Ease

Add the following oils to a diffuser and enjoy:

- 3 drops of NOW® Lavender Oil
- 3 drops of NOW® Peppermint Oil
- 3 drops of NOW® Chamomile Oil

Purifying Blends

Purifying Room

Add the following oils to a diffuser and enjoy:

- 1 drop of NOW® Tea Tree Oil
- 1 drop of NOW® Grapefruit Oil
- 10 drops of NOW® Lemon Oil

Spring Cleaning

Add the following oils to a diffuser and enjoy:

- 10 drops of NOW® Lemongrass Oil
- 5 drops of NOW® Lemon Oil
- 1 drop of NOW® Eucalyptus Oil

Uplifting Blends

Orange You Delightful

Add the following oils to a diffuser and enjoy:

- 10 drops of NOW® Orange Oil
- 25 drops of NOW® Vanilla Concentrate Oil

Energizing

Add the following oils to a diffuser and enjoy:

- 1 drop of NOW® Peppermint Oil
- 1 drop of NOW® Rosemary Oil
- 2 drops of NOW® Cinnamon Leaf Oil

Relaxing Blends

Peace of Mind

Add the following oils to a diffuser and enjoy:

- 10 drops of NOW® Lavender Oil
- 6 drops of NOW® Chamomile Oil

Calming Night

Add the following oils to a diffuser and enjoy:

- 4 drops of NOW® Cypress Oil
- 4 drops of NOW® Lavender Oil
- 4 drops of NOW® Marjoram Oil

Romance Blends

Love is in the Air

Add the following oils to a diffuser and enjoy:

- 1 drop of NOW® Patchouli Oil
- 3 drops of NOW® Jasmine Absolute Oil
- 5 drops of NOW® Geranium Oil

Things are Just Rosey

Add the following oils to a diffuser and enjoy:

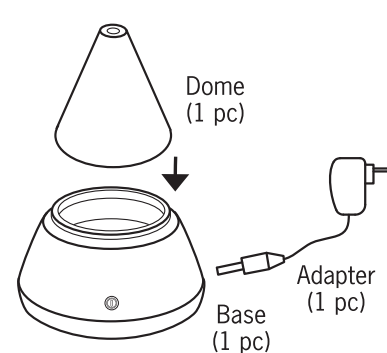
- 1 drop of NOW® Geranium Oil
- 15 drops of NOW® Rose Absolute Oil

Congratulations on your purchase of NOW® Solutions Ultrasonic Oil Diffuser designed for indoor use only. Please read the instructions carefully before using.

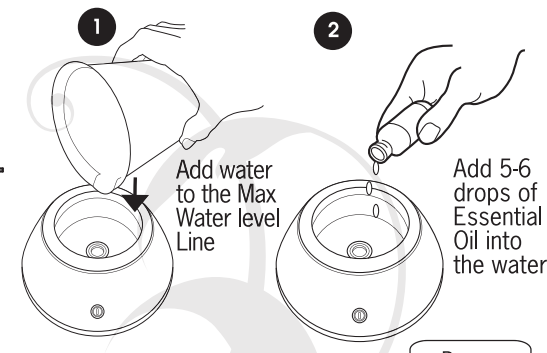
How it works

NOW® Solutions Ultrasonic Oil Diffuser uses high frequency ultrasonic technology that vibrates cool water inside the unit creating an ultra fine mist into the air. When essential oils are added, they are immediately dispersed into the air providing immediate healthful benefits and helping to ionize the air. It can be used in a bedroom, living room, office area or anywhere you want to create a relaxing environment.

What's included



How to add essential oil



USE YOUR OWN CUP



How to use it

NOW® Solutions Ultrasonic Oil Diffuser is easy to use:

- Using your own cup, fill the base with luke warm (not cold) tap water up to the fill indicator arrow mark. **DO NOT OVERFILL.**
 - Do not use distilled or purified/filtered water.
 - Add about 5 or 6 drops of essential oils directly into the water.
- Replace the dome. Plug in your unit and turn it on.

BUTTON PRESSED	MISTING	LIGHTS
Once	On	Rotating Colors
Twice	On	Color choice
Three Times	On	Off
Four Times	Off	Off

The unit will automatically shut off when the water level get to low.

- That's it! Start enjoying immediate healthful benefits your diffuser provides!
NOTE: Oil mist can damage wooden and painted surfaces, wipe up any residue quickly and often.

Advantages

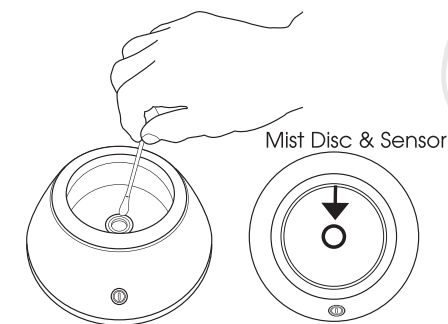
No Heat Involved / No Risk Of Burns
No Chemicals
Extremely Silent
Fast Acting, About 2 Seconds

24v Low Voltage
Energy Efficient
7 Mhz High Frequency Electric Vibrations
Three Rotating Led Lights Change Colors

How to clean

We recommend that you clean your NOW® Solutions Ultrasonic Oil Diffuser every time you change oils. Oils are corrosive, and over time, they build up on the ceramic parts. To ensure a long life of your diffuser, follow these simple steps:

- Rinse the water base with clean water and wipe dry with a clean cloth.
- Use a cotton swab to gently clean the Mist Disc and Sensor.



Important note

If the unit is accidentally tipped over during operation, the water could flow into the inside chamber. Unplug the power and empty all the water. Set it aside in a ventilated place for 3 days & reuse.

Precaution

Please read the instructions carefully before using. Manufacturer accepts no liability for damage caused by incorrect use of the NOW® Solutions Ultrasonic Oil Diffuser.



⚠	1. Clean the unit when changing to a different oil.
!	2. Clean the unit by rinsing the water tank and wiping it dry with a clean cloth.
⊘	3. DO NOT use detergents, solvents or abrasive agents to clean the diffuser unit.
⚠	4. Shut off the power before cleaning.
⚠	5. Use the original adapter provided by the manufacturer.
⚠	6. If you don't use the device for a long time, unplug and pour water out.
⊘	7. Never use steamed water. Never use corrosive solvent to clean product.
⊘	8. Never touch water level sensor and avoid product hitting other objects.
⊘	9. Never put your hand above the ceramic disc when product is working, as this could cause pain and damage the machine.
!	10. Never wrap the adapter with a cloth or paper, etc. Otherwise, it cannot dissipate heat normally and may cause deformation and burn the membrane from a short circuit. Never touch the adapter with wet hands.
⊘	11. Do not use other liquids except for water and drops of essential or fragrance oils.
⊘	12. Do not aim the device at walls, ceilings, and furniture surfaces as excess moisture could cause water damage.